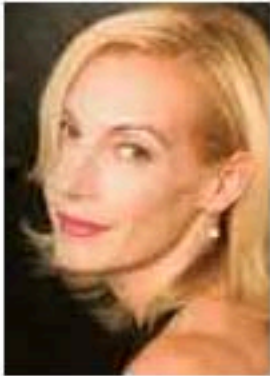


# CABARETSCENES

## Ute Lemper

### Ute Lemper Sings Pablo Nerudo

Joe's Pub  
New York, NY



Ute Lemper is an exemplar of a singing style with a long European pedigree. Every song demands an artifice of total vocal, physical and emotional involvement in the tradition of masters like Lotte Lenya, Martha Schlamme and even to an extent, Edith Piaf. Lemper is not afraid to turn herself inside out in the service of her music, in this case, music she has composed—with contributions by Marcelo Nisinman—to the words of Nobel Prize-winning poet Pablo Neruda.

She chose eleven love poems that range from sexual worship ("Tus manos"), to despair ("The Saddest Poem/No. 20"). In "Allianza" ("Sonata") she used quick-changing tempos to express the poem's images smashing into each other. "El Sueño" found the flamenco within her allowing her to unfurl long moaning phrases. "Oda con un lamento," a shout of despair, was

accompanied by counter-intuitively quirky rhythms.

She pulled out all the stops, however, in the final song to "The Saddest Poem," in which she growled, purred and grimaced, using her voice like a muted trumpet, improvising like a jazz pro, to express the deep heartbreak of the poem.

Her expert and responsive musicians were John Benthall (guitar), Tito Castro (bandoneon), Vana Gierig (piano), and Steve Millhouse (bass).

**Joel Benjamin**

*Cabaret Scenes*

February 2, 2013

[www.cabaretszenes.org](http://www.cabaretszenes.org)